

Gunsmith General Work Instruction for Patriot Defense Interrupter Installation

Objective: These work instructions are created for use as a guideline for installing Patriot Defense interrupters into competition frame Tanfoglio pistols. It's ultimately the gunsmith's responsibility to verify proper fit and function upon completion. Only qualified gunsmith should perform this task.

Legal Notice: No liability is expressed or implied for damage or injury because of improper installation or use of this product or any other Patriot Defense product. Modification of after market products or service may void the firearm's warranty with the manufacturer.

Equipment Required: We highly recommend the use of a Patriot Defense Hammer, or Xtreme Titan hammer for ease of installation during this process. Please also have on hand assorted punch sizes, small brass hammer, gun grease, Dremel with small sanding wheel, or small file.

Work Instructions: These work instructions pick up at the point the firearm is disassembled; and hammer, interrupter, and hammer strut assembly removed.

Verify the firearm is unloaded and no live rounds are present near work area.

1. Remove the hammer, hammer strut, and factory interrupter assembly from the firearm. The factory interrupter roll pin will need to be removed and factory interrupter removed from the assembly.
2. Always begin with fitting of the single action function first. The area below indicates the area on all 3 interrupters that material should be removed from. We call this the inner of the interrupter and will refer to it as that moving forward.



3. The process remains the same for the most part between the 3 models, the R5 typically drops in with no fitting needed. However, there are instances where material will need to be removed from the inner leg (depicted below).



4. Typically, a few thousands at a time are all that's needed when removing material. Its better to go slow and remove less than removing too much and inducing more pre-travel. A Dremel with a small fine

Gunsmith General Work Instruction for Patriot Defense Interrupter Installation

sanding wheel can be used to remove material, however we recommend the use of a file if this is your first go around with working this part.

5. The R7 is the same process as above except it will typically require about .008" - .010" worth of material removal from the inner leg. Again, always fit the single action break first. Pic below indicates material removal from inner leg.



6. The BOLO is extremely oversized and has a radiused inner curve, which allows constant tension on the trigger bar. The same process as above goes for this part except this will require more material removal than the previous two parts. Follow the inner leg curve when removing material and keep the material removal uniform across the entire inner leg. The BOLO is time-consuming, but the result is a zero-pre travel trigger with shortened reset. Pic below indicates material removal from area labeled with (#1). Disregard the area depicted with a #2 in the photo below. This area will be covered shortly with the Double Action function.

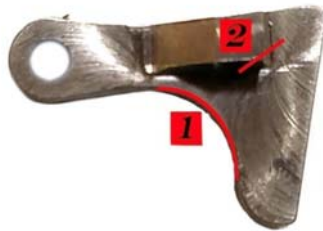


7. A properly set interrupter will consistently reset in single action with the slide on the firearm. For verification with the slide on, squeeze the trigger to the rear of the trigger guard and holding it in its depressed position, rack the slide, the hammer should stay in the cocked SA position, release the trigger allowing it to come forward. You should hear an audible and tactile reset letting you know the fire control mechanism has reset.

Gunsmith General Work Instruction for Patriot Defense Interrupter Installation

The section below will cover adjusting the double action break after the single action break has been properly set. If the double action is not breaking when the trigger is depressed to the rear the following steps should be taken.

8. The picture below depicts the area to adjust if the DA is not breaking when the trigger is depressed. With a fine file lightly drag it across the area marked with #2 below. You're only trying to break the sharp corner of the wing very lightly. If too much material is removed the interrupter will cause the firearm to short stroke in DA causing light strikes. We recommend only a stroke or two across the area at the same angle of the red line near #2.



Once complete, reassembly and check all factory safety mechanisms for proper function. It's your responsibility to understand a properly working firearm and its safety features.